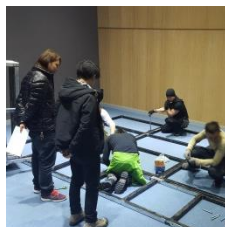
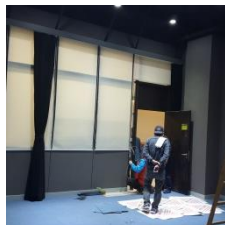
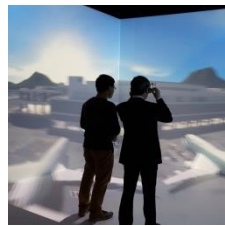
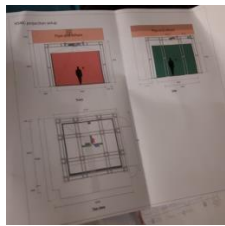
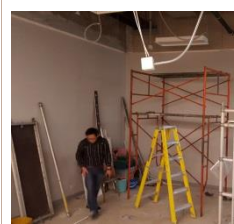


# Virtual Reality and Big Data Analytics



## QESS – Quarterly Progress News Update

*Newsletter #1: 1.12.2015 – 29.2.2016*

*Project: The development of an education and research center with automatic virtual reality platform for 3D interactive learning and big data analytics*

### Event Highlights

#### December 2015 and before

- ✓ **26.8.2015 – 8.10.2015; 29.10.2015** – Meetings with various stakeholders in confirming the location of Cave Automatic Virtual Environment (CAVE), including VPAR, VPDO, Provost, CDMO, Registry, PI and Co-I.
- ✓ **9.10.2015; 16.10.2015** – Held meetings on refurbishing A411 for CAVE installation. Participants included VPAR, VPDO, PI, Co-I, CDMO, HKU representatives and CAVE contractors.
- ✓ **12.11.2015 – 11.12.2015** – Arranged quotation, procurement and purchase order (CDMO, FO, PI and Co-I).
- ✓ **11.12.2015** – Started to recruit multimedia designer and system engineer.
- ✓ **20.12.2015** – Started renovation of room A411 (Figure 1).
- ✓ **29.12.2015** – Conducted on-site meeting at A411 on renovation, settings, dimensions, network and lighting arrangements (HKU, CDMO, PI, and Co-I).

#### January 2016

- ✓ **4.1.2016** – Completed on-site measurement and calibration (CAVE contractor and PI) (Figure 2).
- ✓ **6.1.2016** – Meeting at HKU, visited imseCAVE, and discussed content development of project (HKU, PI, and Co-PI) (Figure 3).
- ✓ **8.1.2015 – 25.1.2016** – Meetings and on-site arrangements on network, lighting, curtain, server box and door access (PI, Co-I, ITSC, CDMO, CAVE contractor).
- ✓ **22.1.2016 – 25.1.2016** – Checking and validation of renovation project (Figure 4).

#### February 2016

- ✓ **1.2.2016 – 5.2.2016** – Completed post-renovation site measurement.
- ✓ **8.2.2016 – 22.2.2016** – Completed production of CAVE components.
- ✓ **19.2.2016** – Started website development.
- ✓ **23.2.2016 – 1.3.2016** – Construction of CAVE floor platform and projection walls (Figure 5).

*What's next? Construction of truss system, complete physical structure, installation of projectors, tracking system and computer, integration test for completion of CAVE systems and content development.*

**Enquiries:**

Dr. Eugene Wong  
eugene Wong@hsmc.edu.hk